

STUDIO TECNICO ASSOCIATO
 ODETTO Geom. Walter
 TORASSA Geom. Massimo Michele
 Via Santuario n.16
 12033 - MORETTA (CN)
 Tel. 0172 94147

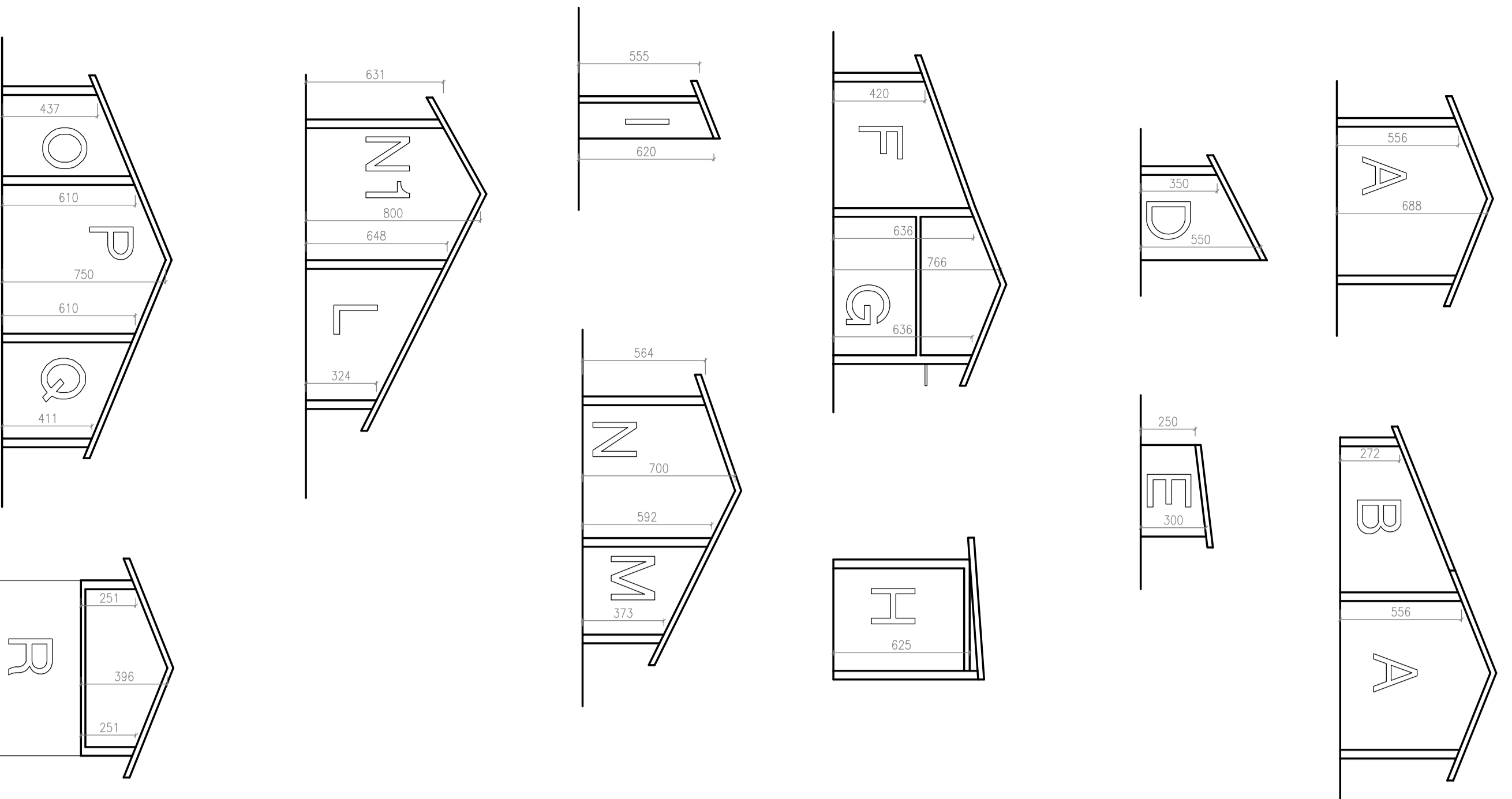
Provincia di CUNEO
 Comune di MORETTA

Proprietà
 ANGARAMO Maddaleno
 DEMCA srl

Progetto di
**PROPOSTA DI PIANO
 DI RECUPERO ZONA PR4**

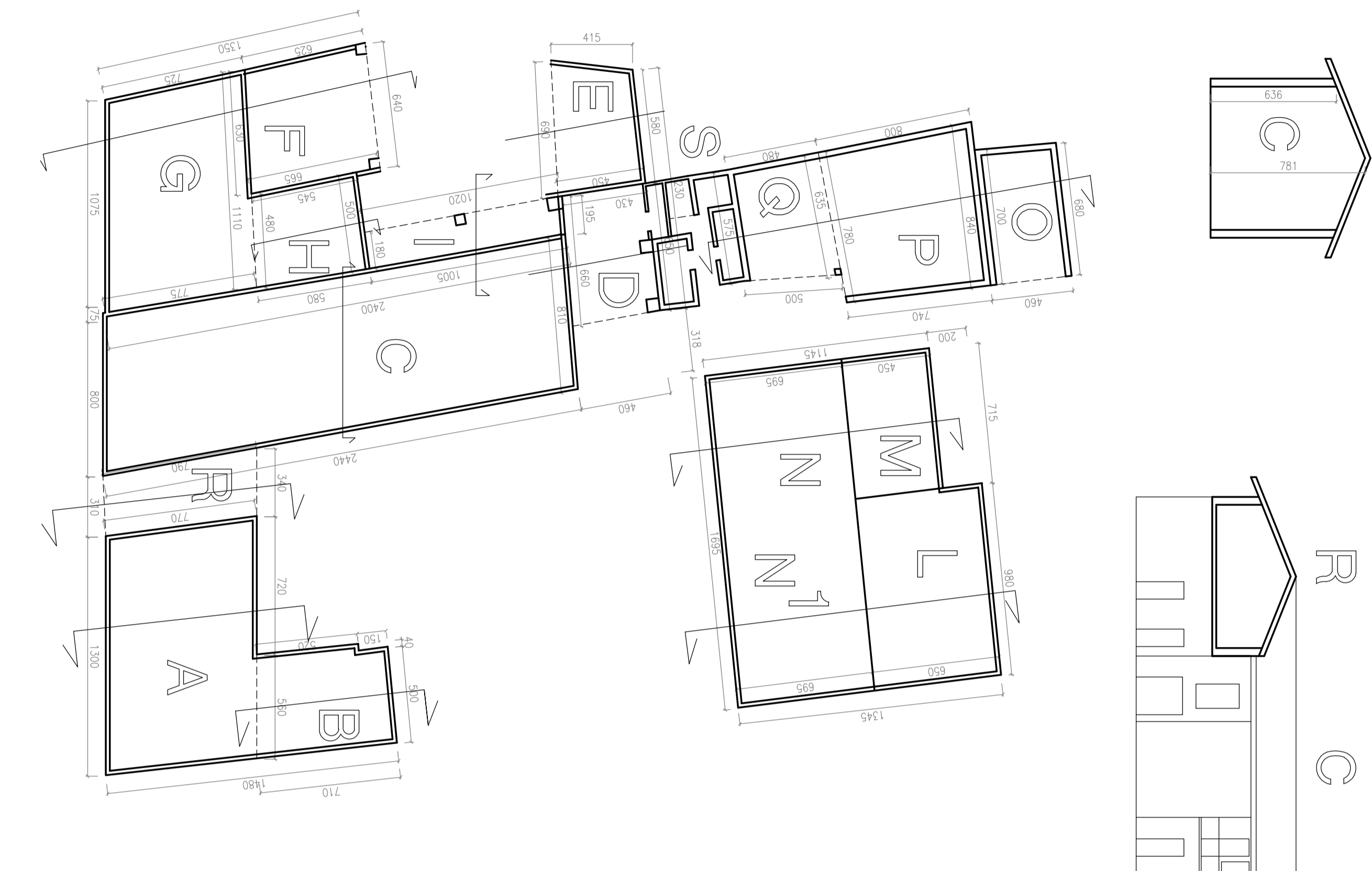
Calcoli planovolumetrici
 esistenti
 - 1ª Integrazione -

DATA: **Novembre 2014** PRN: **0099** ZONA: P.A.R.C. PR4
 IL TECNICO: **12** fogli: **12** volumi: **12** P.D.R. **2a**
 RAPPRESENTAZIONI: DISSEGNO
 SCALE: 1:200



A = $(13,00 + 12,80) / 2 \times 7,70 = \text{mq. } 99,33$
 B = $(7,10 + 6,70) / 2 \times (5,60 + 5,40) / 2 - (1,50 \times 0,40) = \text{mq. } 37,35$
 C = $(24,40 + 24,00) / 2 \times 8,10 = \text{mq. } 196,02$
 D = $(4,60 + 4,30) / 2 \times (6,50 + 6,60) / 2 = \text{mq. } 29,15$
 E = $(6,90 + 5,90) / 2 \times (4,55 + 4,50) / 2 = \text{mq. } 28,96$
 F = $(6,40 + 6,30) / 2 \times (6,25 + 6,65) / 2 = \text{mq. } 40,96$
 G = $(10,75 + 11,10) / 2 \times (7,25 + 7,75) / 2 = \text{mq. } 81,94$
 H = $(4,80 + 5,00) / 2 \times (5,45 + 5,80) / 2 = \text{mq. } 27,56$
 I = $(10,20 + 10,05) / 2 \times (1,80 + 1,95) / 2 = \text{mq. } 18,98$
 L = $6,50 \times 9,80 = \text{mq. } 63,70$
 M = $7,15 \times 4,50 = \text{mq. } 32,18$
 N = $16,95 \times 6,95 = \text{mq. } 117,80$
 O = $(7,00 + 6,80) / 2 \times 4,60 = \text{mq. } 31,74$
 P = $(8,55 + 7,95) / 2 \times (8,00 + 7,40) / 2 = \text{mq. } 63,53$
 Q = $(6,50 + 5,90) / 2 \times (4,80 + 5,00) / 2 = \text{mq. } 30,38$
 R = $(3,40 + 3,10) / 2 \times (7,70 + 7,90) / 2 = \text{mq. } 25,35$
 S = $2,00 \times 4,80 + 0,90 \times 1,00 + 3,80 \times 2,05 + 3,90 \times 1,70 = \text{mq. } 24,92$

Totale = mq. 949,85



A = mq. $99,33 \times (5,56 + 6,88) / 2 = \text{mc. } 617,83$
 B = mq. $37,35 \times (5,56 + 2,72) / 2 = \text{mc. } 154,63$
 C = mq. $196,02 \times (6,36 + 7,81) / 2 = \text{mc. } 1388,80$
 D = mq. $29,15 \times (3,50 + 5,50) / 2 = \text{mc. } 131,18$
 E = mq. $28,96 \times (2,50 + 3,00) / 2 = \text{mc. } 79,64$
 F = mq. $40,96 \times (6,36 + 4,20) / 2 = \text{mc. } 216,27$
 G = mq. $81,94 \times (6,36 + 7,66) / 2 = \text{mc. } 574,40$
 H = mq. $27,56 \times 6,25 = \text{mc. } 172,25$
 I = mq. $18,90 \times (6,20 + 5,55) / 2 = \text{mc. } 111,04$
 L = mq. $63,70 \times (6,48 + 3,24) / 2 = \text{mc. } 309,58$
 M = mq. $32,18 \times (5,92 + 3,73) / 2 = \text{mc. } 155,27$
 N = $7,15 \times 6,95 \times (5,64 + 5,92 + 7,00) / 3 = \text{mc. } 307,43$
 N1 = $9,80 \times 6,95 \times (6,48 + 6,31 + 8,00) / 3 = \text{mc. } 472,00$
 O = mq. $31,74 \times (4,37 + 6,10) / 2 = \text{mc. } 166,16$
 P = mq. $63,53 \times (6,10 + 7,50) / 2 = \text{mc. } 432,00$
 Q = mq. $30,38 \times (6,10 + 4,11) / 2 = \text{mc. } 155,09$
 R = mq. $25,35 \times (2,51 + 3,96) / 2 = \text{mc. } 82,01$

Totale = mq. 5525,58

